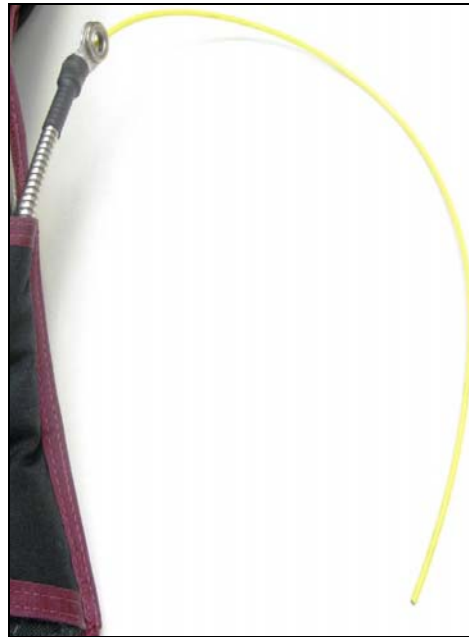
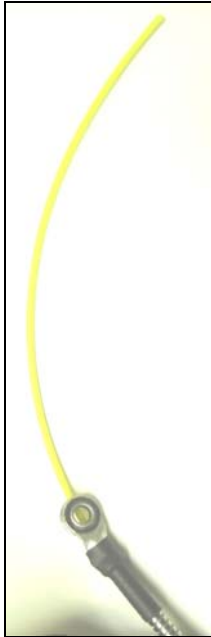




Cutaway Cable Trim Instructions – All Systems



ENGINEERING DEPARTMENT

1645 LEXINGTON AVENUE ♦ DELAND FL 32724-2106 ♦ TELEPHONE +1 386 736 7589 ♦ FAX +1 386 734 7537

UPT@UPTVECTOR.COM ♦ WWW.UPTVECTOR.COM

INSTRUCT.CUTAWAY CABLE TRIM INSTRUCTIONS REV 2.doc

Step 1



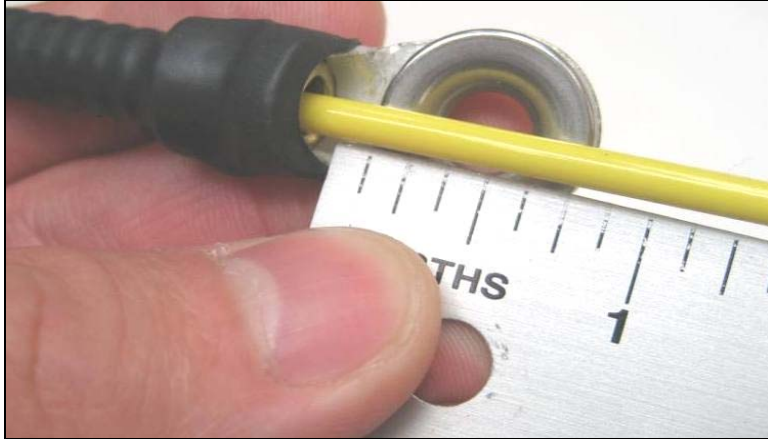
Insure the cutaway handle Velcro is squarely mated to the main lift web Velcro.

Step 2

<u>CUTAWAY CABLE TRIM CHART</u>		
Type	Right (short side)	Left (long side)
RSL-Sport	7 1/2"	5 1/2"
Non RSL- Sport		
Sigma	8"	6"
Military	9 1/2"	8
Marines only TS/MM	14" (OAL)	43" (OAL)
TS/MM Load Cell System	16" (OAL)	45" (OAL)

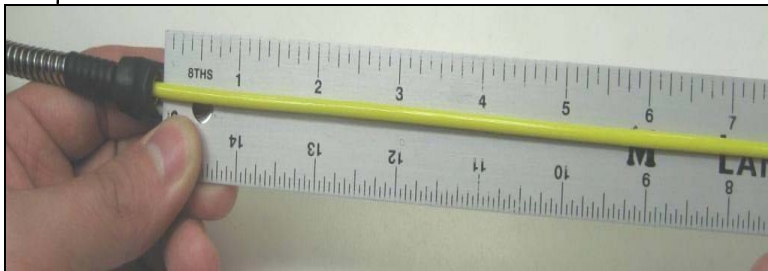
Refer to the trim chart #00029 for correct trim lengths.

Step 3a



Begin measuring where the cable comes out of the end fitting.

Step 3b

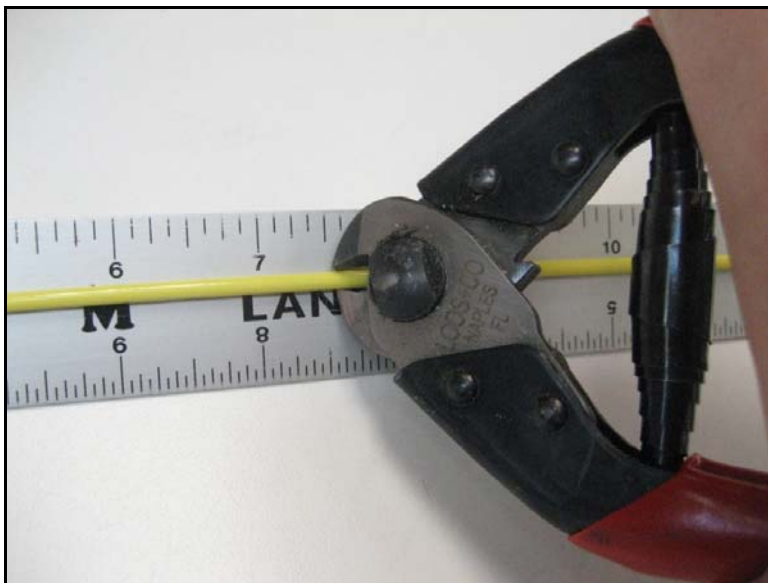


Step 4a



With appropriate cable cutters, snip to the correct length,

4b



Step 5

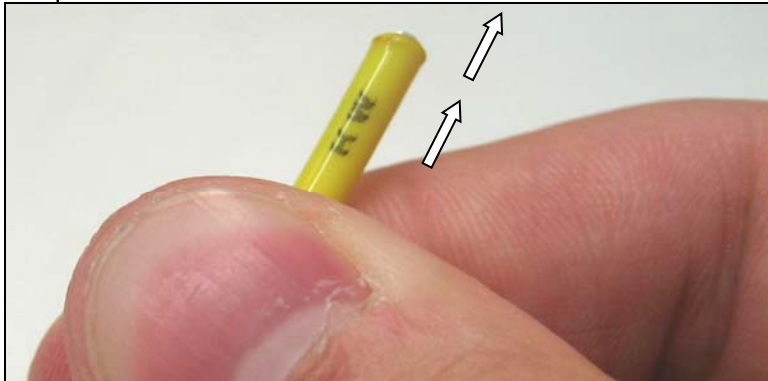


To smooth out the cut ends, heat **ONLY THE TIPS** with a lighter or butane torch till it just begins to mushroom.

NOTE:

1. Proceed very quickly through steps 5-6.
2. Steps 5-6 should be practiced before attempting on the handle.

Step 6a



Quickly, firmly grasp the cable just below the heated end.

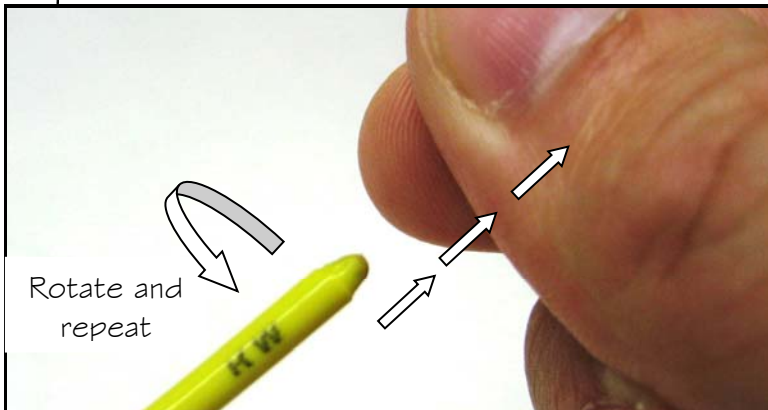
Step 6b



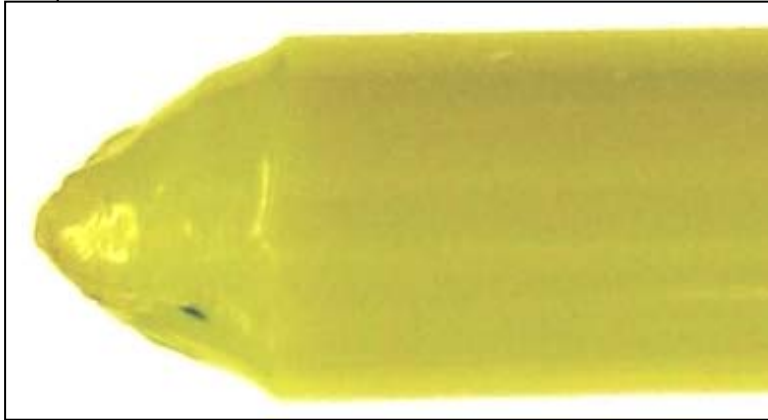
In one smooth and fluent motion, quickly and repeatedly pull the firmly gripped cable completely out rotating it 90° each time.

Reheating up to 3 times may be necessary.

Step 6c



Step 6d



An example of a perfectly burned and smoothed end after being heated only one time.

Step 6e

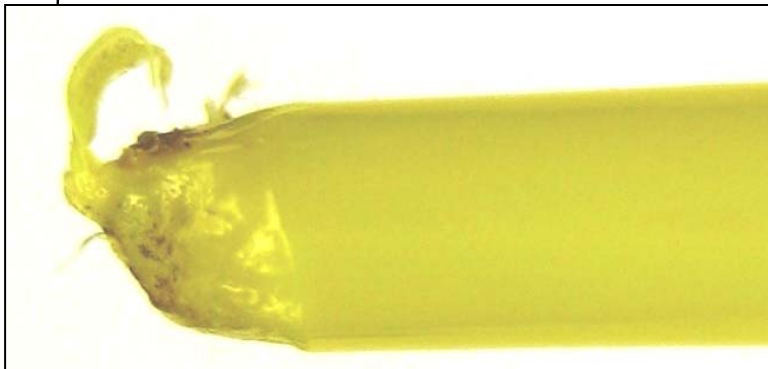


Examples of poorly burned cable ends.

NOTE:

Poorly burned ends may snag on and damage the Type 2a locking loop on main risers.

Step 6f



Step 6g

