



Javelin Odyssey
Recommended
Main Closing Loop Length

NOTE: All instructions following are given with the assumption that the **appropriate size main parachute** is assembled into the container.

(Reference the Javelin & Javelin Odyssey Container sizing chart)

1. Hold your main #2 closing (sequence) flap up vertically so you can see the reversed Z-box stitch pattern inside the main container. (Fig 1)

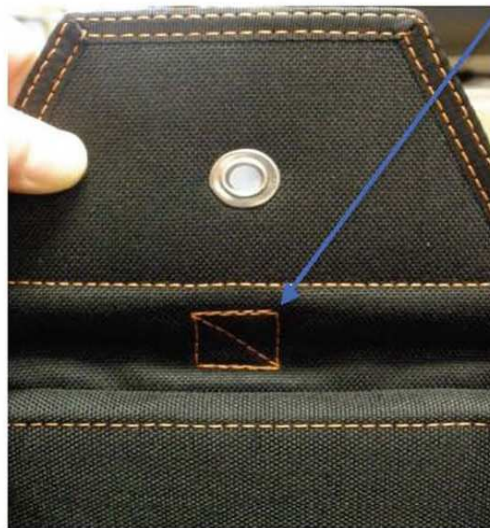


Fig. 1



Javelin Odyssey
Recommended
Main Closing Loop Length

2. While holding the main #2 flap vertically, pull your main closing loop up vertically with a pull up cord threaded. The top of the main closing loop needs to fall within the reversed Z-box stitch pattern as shown in Fig. 2.



Fig. 2