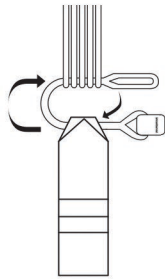


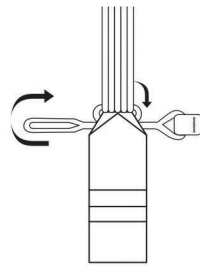


Installation Instructions for Removable Softlinks TANDEM

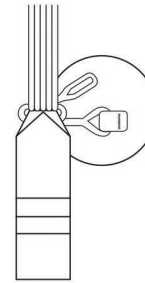
NZ AEROSPORTS LTD
Level 4, 137 Great North Road
Grey Lynn Auckland, New Zealand
Phone: +64 9 360 0045
info@nzaerosports.com
www.nzaerosports.com



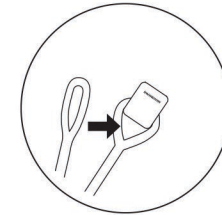
1. Pass the softlink through the riser and the lines ensuring that you tuck the corners of the riser webbing in.



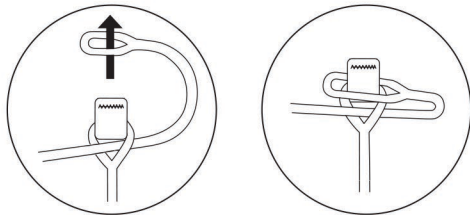
2. Pass the Softlink through the riser and line group a 2nd time.



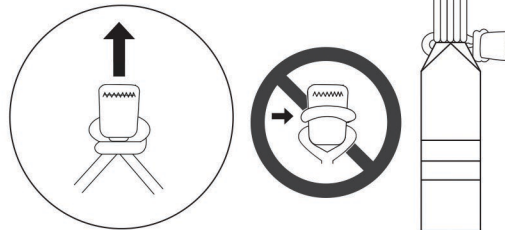
3. Both ends of the Softlink should exit on the same side.



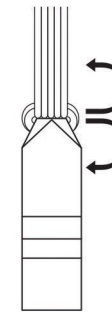
4. Pass the end through the opening under the tab.



5. Feed the tab through the loop.



6. Pull the tab so that the loop tightens.



7. Grasp above and below the Softlink and pull to 20kg to set the link. Tuck the tab away inside the riser webbing opening.