



Installation Instructions for Removable Softlinks SPORT

NZ AEROSPORTS LTD

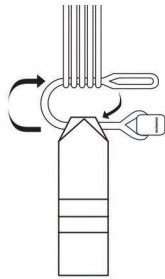
Level 4, 137 Great North Road

Grey Lynn Auckland, New Zealand

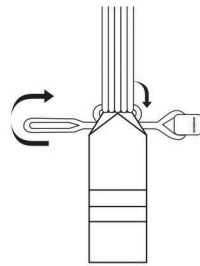
Phone: +64 9 360 0045

info@nzaerosports.com

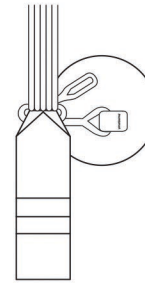
www.nzaerosports.com



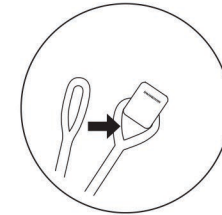
1. Pass the softlink through the riser and the lines ensuring that you tuck the corners of the riser webbing in.



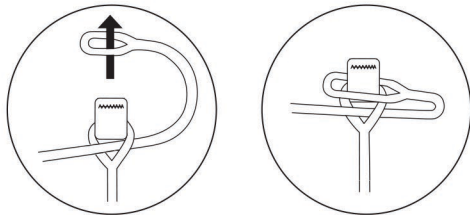
2. Pass the Softlink through the riser and line group a 2nd time.



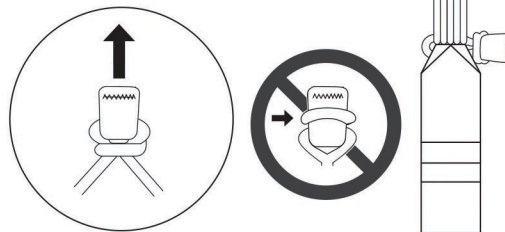
3. Both ends of the Softlink should exit on the same side.



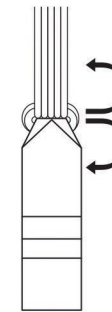
4. Pass the end through the opening under the tab.



5. Feed the tab through the loop.



6. Pull the tab so that the loop tightens.



7. Grasp above and below the Softlink and pull to 20kg to set the link. Tuck the tab away inside the riser webbing opening.