

## MOJO ASSEMBLY

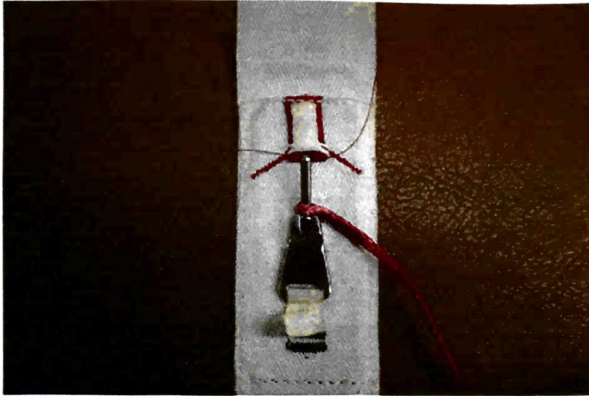


Figure 1

1. Push a length of 4.75-lb seal thread through the fold of the red tape tacking anchor (or use a needle to pull it through).

Insert the MOJO pin through the loop in the end of the red MOJO RSL lanyard.

2. Push the pin as far as possible into the white pin sleeve.

Tie the seal thread snugly between the red lanyard and the top of the triangular MOJO base piece.

Use a standard surgeon's knot and locking knot, the beginning of which is shown in Figure 2.



Figure 2

3. Trim the thread ends, leaving 1" tails.



Figure 3

## MOJO ASSEMBLY

4. Fold the bridle horizontally across the top of the freebag until there is 1 foot remaining before the MOJO assembly. Fold the yoke of the freebag over the stacked bridle, with the pilot chute end of the bridle coming out the wearer's right.

5. Make 1 fold of bridle horizontally in the space between the MOJO cover flaps. Then "S" fold the bridle so the MOJO is on top of the stack (**Fig 4**), with the pin pointed to the wearer's left. Fold the remaining bridle horizontally on top of the MOJO.



Figure 4

6. Close the MOJO cover flaps, with the MOJO lanyard coming out the wearer's left, and the bridle making a 90-degree turn to come out the center of the MOJO flaps. Clamp the bridle stack. (**Fig 5**)

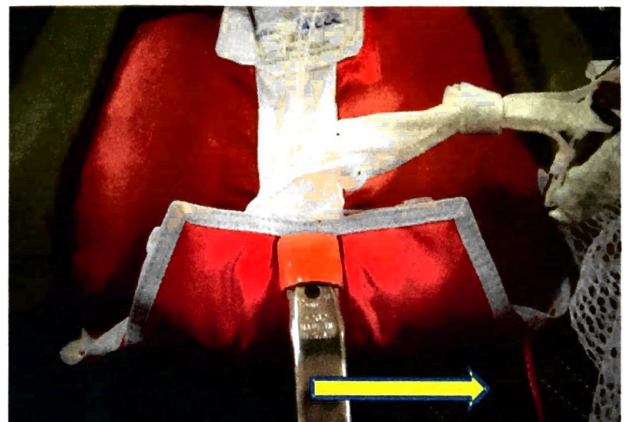


Figure 5

## MOJO ASSEMBLY

7. Install the RSL stiffeners in their pockets (**Fig 6**) and the lanyard tab in its pocket (**Fig 7**). Excess lanyard can be tucked between the bag and the pack tray (**Fig 8**). Install the ripcord, ensuring the RSL ring is between the two ripcord guide rings. (**Fig 9**).



Figure 6

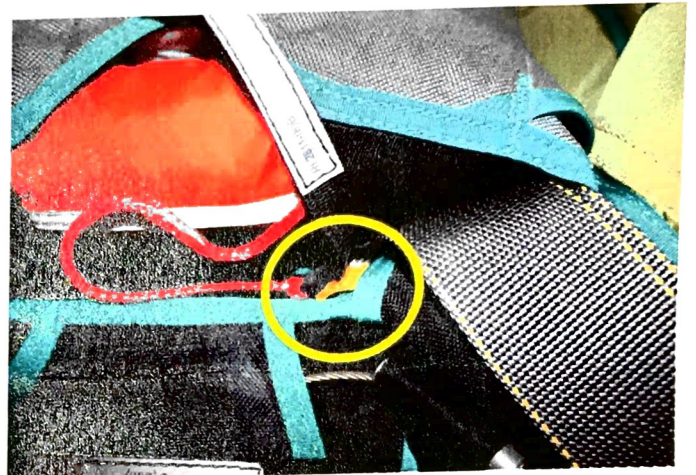


Figure 7



Figure 8

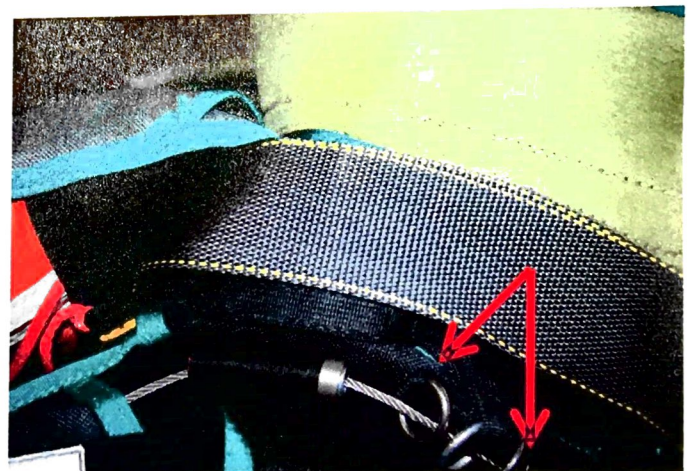


Figure 9