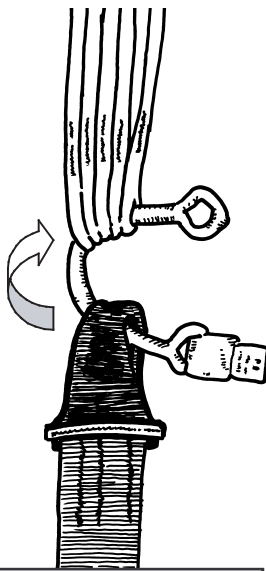




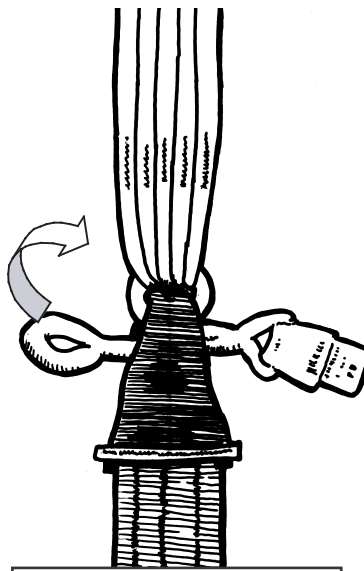
Slink Cover

The slink cover is provided as an option to those who **do not** wish for the slider to descend over the riser & toggles.

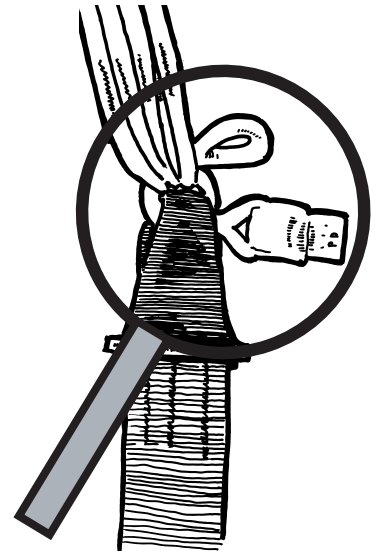
Riser



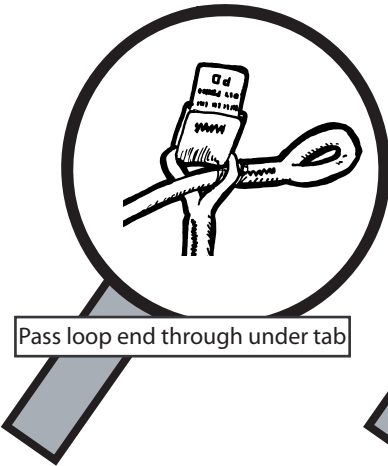
Pass slink through riser & lines



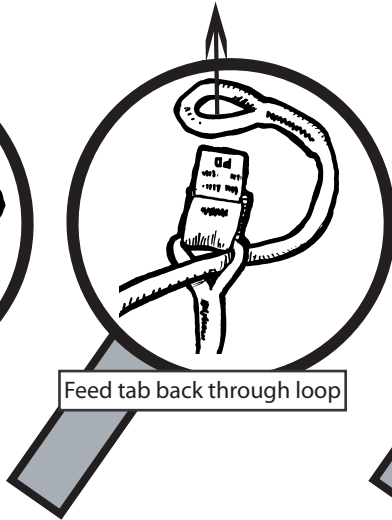
Pass slink through riser & line group a second time



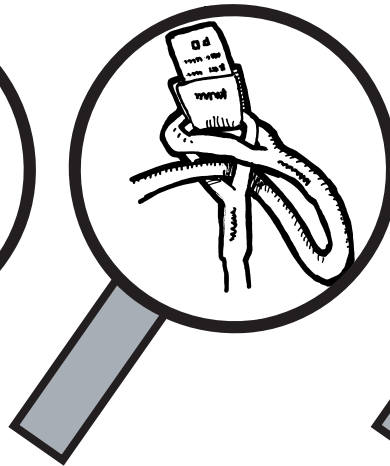
Pull tight



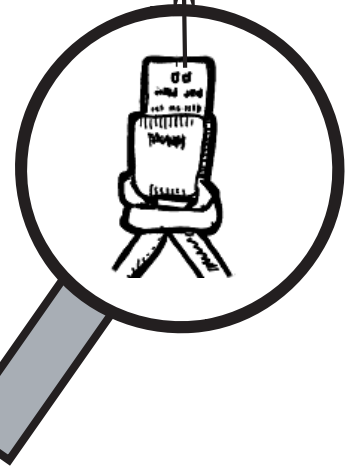
Pass loop end through under tab



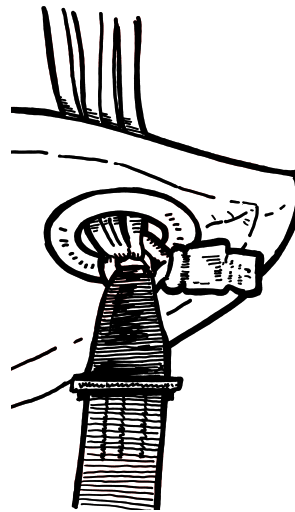
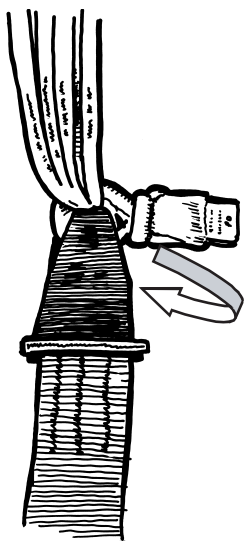
Feed tab back through loop



Pull tight



Tuck tab away



Tuck tab away

During the first 15-20 deployments on a set of slinks they will develop a "set". Make sure this set happens properly by keeping the Slink tab positioned inside the riser during these initial pack jobs/deployments.