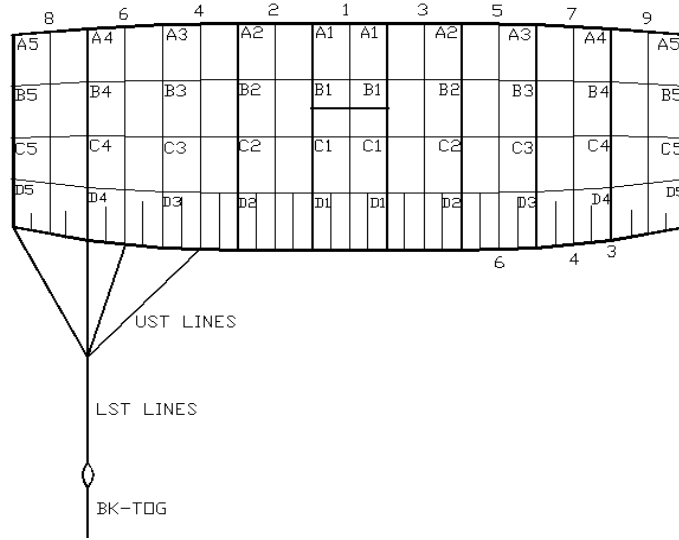




**LINE TRIM CHART
FOR
SABRE3 190-230**

Performance Designs, Inc
1300 E Int'l Speedway Blvd
DeLand FL 32724
Telephone: 386-738-2224
Fax: 386-734-8297



	Measurement in Inches			Measurement in Centimeters		
	SB-190	SB-210	SB-230	SB-190	SB-210	SB-230
A1	139 3/4	146 7/8	153 3/4	355.0	373.1	390.5
A1-B1	2 5/8	3	2 7/8	6.8	7.5	7.4
A1-C1	9 1/2	10	10 1/2	24.2	25.4	26.6
A1-D1	19 3/4	20 3/4	21 3/4	50.1	52.7	55.2
A2	139 3/4	146 7/8	153 3/4	354.9	373.0	390.4
A2-B2	2 3/4	3	3	6.9	7.6	7.5
A2-C2	9 1/2	10	10 1/2	24.2	25.4	26.6
A2-D2	19 3/4	20 3/4	21 3/4	50.2	52.8	55.3
A3	139 5/8	146 7/8	153 5/8	354.8	372.9	390.3
A3-B3	2 3/4	3 1/8	3	7.0	7.8	7.7
A3-C3	9 3/8	9 7/8	10 3/8	23.8	25.0	26.2
A3-D3	19 1/2	20 1/2	21 1/2	49.5	52.1	54.5
A4	139 5/8	146 3/4	153 5/8	354.6	372.7	390.1
A4-B4	2 7/8	3 1/8	3 1/8	7.2	8.1	8.0
A4-C4	9	9 3/8	9 7/8	22.8	23.9	25.1
A4-D4	18 5/8	19 5/8	20 1/2	47.3	49.8	52.0
A5	139 1/2	146 5/8	153 1/2	354.4	372.4	389.8
A5-B5	2 3/4	3	3 1/8	7.1	7.6	8.0
A5-C5	8 1/4	8 5/8	9	20.9	22.0	23.0
A5-D5	16 7/8	17 3/4	18 5/8	42.9	45.2	47.2
LST	101 1/8	106	110 3/4	256.9	269.4	281.4
A5-UST1	9 3/8	9 5/8	9 7/8	23.7	24.4	25.0
A5-UST3	7 3/8	7 5/8	7 7/8	18.8	19.4	19.9
A5-UST4	8 5/8	8 7/8	9 1/8	21.9	22.6	23.1
A5-UST6	12 3/8	12 7/8	13 1/4	31.4	32.7	33.7
B STAB SLK	1/2	1/2	1/2	1.3	1.3	1.3
C STAB SLK	3/4	3/4	3/4	1.9	1.9	1.9
D STAB SLK	1	1	1	2.5	2.5	2.5
*BK-TOG +0	25 5/8	26 7/8	28 1/8	65.1	68.4	71.5
*BK-TOG +3	28 5/8	29 7/8	31 1/8	72.7	76.0	79.1
*BK-TOG OPEN END	25 5/8	26 7/8	28 1/8	65.1	68.4	71.5
**Dome Channel Slider with snaps	12 1/2" Chord	12 1/2" Chord	14" Chord	31.8 Chord	31.8 Chord	35.56 Chord
	35 1/4" Span	35 1/4" Span	33" Span	89.4 Span	89.4 Span	83.82 Span

*Due to development methodology, the finished BK-TOG dimensions may not scale. Some SABRE3 canopies are built with longer Bk-tog lines per customer request, typically +3", or with unfinished OPEN END.

[**Click here to see "How To Measure a Slider": https://www.youtube.com/watch?v=vZB0sNdUOcs](https://www.youtube.com/watch?v=vZB0sNdUOcs)