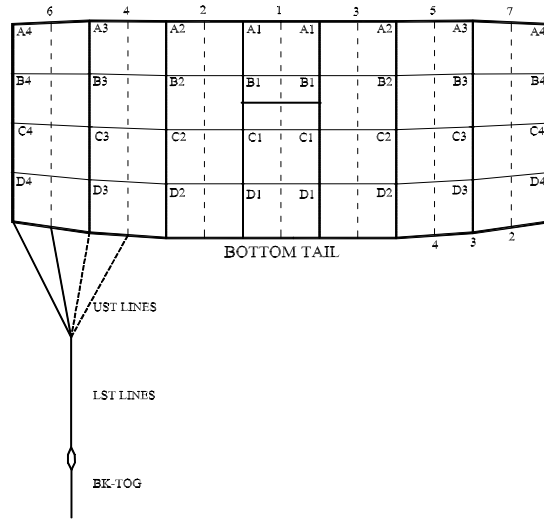




LINE TRIM CHART
FOR
SPECTRE 097 - 135



| | Measurement in Inches | | | | Measurement in Centimeters | | | |
|----------------|-----------------------|-----------|-----------|-----------|----------------------------|------------|------------|------------|
| | SP-097 | SP-107 | SP-120 | SP-135 | SP-097 | SP-107 | SP-120 | SP-135 |
| CA1 | 95 | 99 3/4 | 105 1/2 | 112 3/8 | 241.3 | 253.4 | 268.0 | 285.4 |
| CA1-CB1 | 2 1/2 | 2 3/4 | 3 1/2 | 3 1/8 | 6.4 | 7.0 | 8.9 | 7.9 |
| CA1-C1 | 8 5/8 | 9 1/8 | 9 3/4 | 10 1/2 | 21.9 | 23.2 | 24.8 | 26.7 |
| CA1-D1 | 16 1/4 | 17 1/8 | 18 3/8 | 19 5/8 | 41.3 | 43.5 | 46.7 | 49.8 |
| A2 | 95 7/8 | 100 5/8 | 106 1/2 | 113 3/8 | 243.5 | 255.6 | 270.5 | 288.0 |
| A2-B2 | 2 1/4 | 2 1/4 | 2 1/2 | 2 5/8 | 5.7 | 5.7 | 6.4 | 6.7 |
| A2-C2 | 7 1/2 | 7 7/8 | 8 1/2 | 9 1/8 | 19.1 | 20.0 | 21.6 | 23.2 |
| A2-D2 | 15 1/4 | 16 | 17 1/8 | 18 3/8 | 38.7 | 40.6 | 43.5 | 46.7 |
| A3 | 95 3/4 | 100 5/8 | 106 1/2 | 113 1/4 | 243.2 | 255.6 | 270.5 | 287.7 |
| A3-B3 | 2 1/8 | 2 1/8 | 2 3/8 | 2 1/2 | 5.4 | 5.4 | 6.0 | 6.4 |
| A3-C3 | 6 7/8 | 7 1/4 | 7 3/4 | 8 3/8 | 17.5 | 18.4 | 19.7 | 21.3 |
| A3-D3 | 14 1/4 | 15 | 16 1/8 | 17 3/8 | 36.2 | 38.1 | 41.0 | 44.1 |
| A4 | 95 3/4 | 100 1/2 | 106 3/8 | 113 1/4 | 243.2 | 255.3 | 270.2 | 287.7 |
| A4-B4 | 2 1/8 | 2 1/8 | 2 3/8 | 2 1/2 | 5.4 | 5.4 | 6.0 | 6.4 |
| A4-C4 | 6 | 6 3/8 | 6 7/8 | 7 3/8 | 15.2 | 16.2 | 17.5 | 18.7 |
| A4-D4 | 12 5/8 | 13 3/8 | 14 3/8 | 15 1/2 | 32.1 | 34.0 | 36.5 | 39.4 |
| LST | 67 1/8 | 70 1/2 | 74 5/8 | 77 3/8 | 170.5 | 179.1 | 189.5 | 196.5 |
| A4-UST1 | 7 1/4 | 7 5/8 | 7 1/4 | 6 3/4 | 18.4 | 19.4 | 18.4 | 17.1 |
| A4-UST2 | 7 1/4 | 7 5/8 | 7 1/4 | 6 3/4 | 18.4 | 19.4 | 18.4 | 17.1 |
| A4-UST3 | 7 1/4 | 7 5/8 | 7 1/4 | 6 3/4 | 18.4 | 19.4 | 18.4 | 17.1 |
| A4-UST4 | 7 1/4 | 7 5/8 | 7 1/4 | 6 3/4 | 18.4 | 19.4 | 18.4 | 17.1 |
| B STAB SLK | 1/2 | 1/2 | 1/2 | 1/2 | 1.3 | 1.3 | 1.3 | 1.3 |
| C STAB SLK | 1 | 1 | 1 | 1 | 2.5 | 2.5 | 2.5 | 2.5 |
| D STAB SLK | 1 1/2 | 1 1/2 | 1 1/2 | 1 1/2 | 3.8 | 3.8 | 3.8 | 3.8 |
| BK-TOG* | 19 1/8 | 22 1/8 | 21 1/8 | 23 3/8 | 48.6 | 56.2 | 53.7 | 59.4 |
| Channel Slider | 20" Chord | 20" Chord | 20" Chord | 21" Chord | 50.8 Chord | 50.8 Chord | 50.8 Chord | 53.3 Chord |
| | 31" Span | 31" Span | 31" Span | 31" Span | 78.7 Span | 78.7 Span | 78.7 Span | 78.7 Span |

*Due to development methodology, the finished BK-TOG dimensions may not scale

*Refer to Document MAN-018 or MAN-019 for measuring sliders