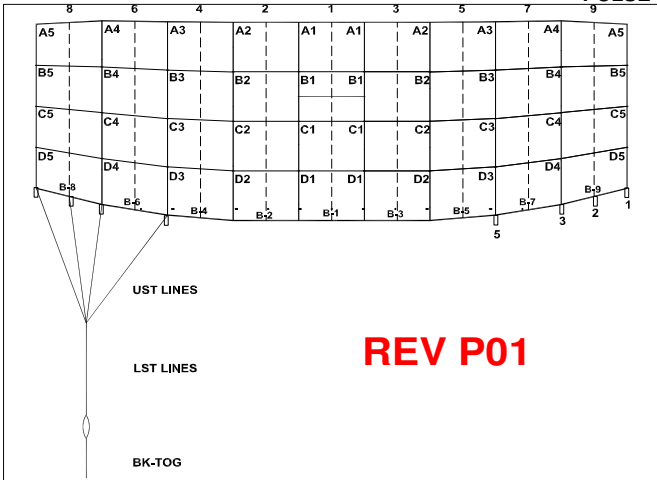


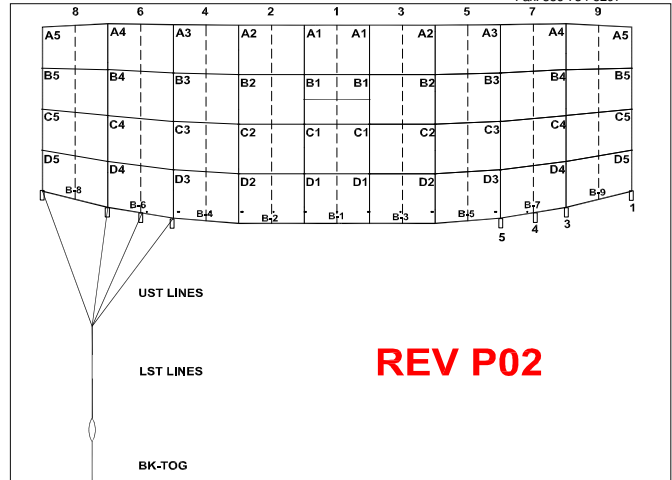


**LINE TRIM CHART  
PULSE 107-170**

Fax: 386-734-8297



**REV P01**



**REV P02**

**NOTE: 1 Control Hook-up attachment is different between Revision P01 and P02**

Rev P01 = 1, 2, 3, 5

Rev P02 = 1, 3, 4, 5

**NOTE: 2 New Rev will be printed on warning label or hand marked "P02" if upgraded.**

**Please hand mark warning label if upgrade takes place outside Performance Designs.**

	Rev P01					Rev P02														
	Measurement in Inches					Measurement in Centimeters					Measurement in Inches					Measurement in Centimeters				
	PL-107	PL-120	PL-135	PL-150	PL-170	PL-107	PL-120	PL-135	PL-150	PL-170	PL-107	PL-120	PL-135	PL-150	PL-170	PL-107	PL-120	PL-135	PL-150	PL-170
A1	107 5/8	113 3/8	119 3/4	125 5/8	133 1/8	273.3	288.0	304.0	319.2	338.3	104 3/4	110 3/8	116 1/2	122 3/8	129 5/8	266.1	280.4	296.0	310.7	329.2
A1-B1	2 1/8	2 1/4	2 1/2	2 5/8	2 3/4	5.5	5.8	6.2	6.5	6.9	2 1/4	2 1/4	2 1/2	2 5/8	2 3/4	5.7	6.0	6.4	6.7	7.1
A1-C1	7 3/8	7 7/8	8 1/4	8 3/4	9 3/8	18.7	19.9	21.1	22.3	23.8	7 1/2	8	8 1/2	9	9 5/8	19.2	20.4	21.6	22.9	24.4
A1-D1	14 1/2	15 3/8	16 3/8	17 1/4	18 1/2	36.8	39.1	41.6	44.0	47.0	14 7/8	15 3/4	16 3/4	17 3/4	18 7/8	37.6	40.0	42.6	45.0	48.1
A2	108 1/4	114	120 3/8	126 3/8	134	274.8	289.6	305.8	321.1	340.3	104 3/4	110 3/8	116 1/2	122 3/8	129 5/8	266.1	280.4	296.0	310.8	329.4
A2-B2	2 1/8	2 1/4	2 3/8	2 1/2	2 3/4	5.5	5.8	6.1	6.5	6.9	2 1/8	2 1/4	2 3/8	2 1/2	2 3/4	5.5	5.8	6.2	6.5	6.9
A2-C2	7 1/2	8	8 1/2	9	9 1/2	19.1	20.2	21.5	22.7	24.2	7 5/8	8	8 1/2	9	9 5/8	19.2	20.4	21.7	22.9	24.4
A2-D2	14 1/2	15 3/8	16 3/8	17 3/8	18 1/2	36.9	39.2	41.7	44.1	47.1	14 3/4	15 5/8	16 5/8	17 5/8	18 3/4	37.4	39.7	42.2	44.7	47.7
A3	109 1/4	115 1/8	121 5/8	127 3/4	135 3/8	277.5	292.6	309.0	324.5	344.0	104 5/8	110 3/8	116 1/2	122 3/8	129 3/4	265.8	280.2	295.9	310.7	329.4
A3-B3	2 3/8	2 1/2	2 5/8	2 3/4	2 7/8	5.9	6.2	6.6	6.9	7.4	2 1/8	2 1/4	2 3/8	2 1/2	2 5/8	5.3	5.6	5.9	6.2	6.6
A3-C3	7 5/8	8	8 1/2	9	9 5/8	19.3	20.5	21.7	23.0	24.5	7 1/4	7 5/8	8 1/8	8 5/8	9 1/8	18.3	19.4	20.6	21.8	23.2
A3-D3	14 7/8	15 3/4	16 3/4	17 3/4	18 7/8	37.6	40.0	42.5	44.9	48.0	14 3/8	15 1/4	16 1/4	17 1/4	18 3/8	36.6	38.8	41.3	43.7	46.6
A4	109 3/4	115 3/4	122 3/8	128 1/2	136 1/4	278.9	294.2	310.7	326.4	346.2	104 1/2	110 1/4	116 1/2	122 1/4	129 3/4	265.5	280.0	295.8	310.7	329.5
A4-B4	2 1/8	2 1/4	2 3/8	2 1/2	2 3/4	5.5	5.8	6.1	6.4	6.8	1 7/8	1 7/8	2	2 1/8	2 1/4	4.6	4.9	5.2	5.5	5.8
A4-C4	7 1/8	7 5/8	8	8 1/2	9	18.2	19.3	20.4	21.6	23.0	6 5/8	7	7 3/8	7 7/8	8 3/8	16.7	17.7	18.8	19.9	21.2
A4-D4	14	14 3/4	15 3/4	16 5/8	17 3/4	35.4	37.6	40.0	42.3	45.1	13 1/4	14 1/8	15	15 7/8	16 7/8	33.7	35.8	38.1	40.3	43.0
A5	107	112 7/8	119 1/4	125 3/8	133	271.7	286.6	302.9	318.3	337.7	104 3/8	110 1/8	116 3/8	122 3/8	129 3/4	265.1	279.8	295.7	310.7	329.7
A5-B5	1 5/8	1 5/8	1 3/4	1 7/8	2	4.0	4.2	4.5	4.7	5.0	1 5/8	1 3/4	1 7/8	1 7/8	2	4.1	4.4	4.6	4.9	5.2
A5-C5	5 5/8	6	6 3/8	6 3/4	7 1/4	14.4	15.3	16.2	17.1	18.3	5 3/4	6 1/8	6 1/2	6 7/8	7 3/8	14.7	15.6	16.6	17.5	18.6
A5-D5	11 3/8	12 1/8	12 7/8	13 5/8	14 1/2	28.9	30.7	32.7	34.5	36.8	11 5/8	12 3/8	13 1/8	13 7/8	14 3/4	29.5	31.3	33.3	35.2	37.6
LST	77 1/4	80 3/4	84 5/8	88 1/4	92 3/4	196.4	205.3	214.9	224.1	235.6	74 3/4	78	81 5/8	85 1/8	89 1/2	189.7	198.2	207.5	216.2	227.2
A5-UST1	6 3/4	7	7 3/8	7 5/8	8	17.2	17.9	18.7	19.4	20.4	6 1/8	6 3/8	6 3/4	6 7/8	7 1/2	20.6	21.4	22.3	23.2	24.3
A5-UST2	7 7/8	8 1/4	8 3/4	9	9 1/2	20.1	21.1	22.1	23.0	24.2	6 5/8	6 7/8	7 1/4	7 1/2	7 7/8	16.8	17.5	18.3	19.0	19.9
A5-UST3	11 1/4	11 3/4	12 3/8	13	13 5/8	28.6	30.0	31.5	32.9	34.7	7 1/2	7 3/4	8 1/8	8 1/2	8 7/8	18.9	19.7	20.6	21.4	22.5
A5-UST5	15 1/2	16 1/4	17	17 3/4	18 5/8	39.4	41.2	43.1	45.0	47.3	11 3/4	12 1/4	12 7/8	13 3/8	14	30.0	31.2	32.6	33.9	35.5
B STAB SLK	1/2	1/2	1/2	1/2	1/2	1.3	1.3	1.3	1.3	1.3	1/2	1/2	1/2	1/2	1/2	1.3	1.3	1.3	1.3	1.3
C STAB SLK	1	1	1	1	1	2.5	2.5	2.5	2.5	2.5	1	1	1	1	1	2.5	2.5	2.5	2.5	2.5
D STAB SLK	1 1/2	1 1/2	1 1/2	1 1/2	1 1/2	3.8	3.8	3.8	3.8	3.8	1 1/2	1 1/2	1 1/2	1 1/2	1 1/2	3.8	3.8	3.8	3.8	3.8
BK-TOG	16	16 7/8	18	19	20 1/4	40.5	42.9	45.6	48.1	51.3	16 3/8	17 1/4	18 3/8	19 3/8	20 3/4	41.5	44.0	46.7	49.3	52.5
Channel Slider (FS fabric)	23" Chord	23" Chord	23" Chord	23" Chord	23" Chord	58.4 Chord	58.4 Chord	58.4 Chord	58.4 Chord	58.4 Chord	23" Chord	23" Chord	23" Chord	23" Chord	23" Chord	58.4 Chord	58.4 Chord	58.4 Chord	58.4 Chord	58.4 Chord
	31" Span	31" Span	31" Span	31" Span	31" Span	78.7 Span	78.7 Span	78.7 Span	78.7 Span	78.7 Span	31" Span	31" Span	31" Span	31" Span	31" Span	78.7 Span	78.7 Span	78.7 Span	78.7 Span	78.7 Span
Dome Slider	N/A	N/A	N/A	N/A	N/A	N/A	N/A	N/A	N/A	N/A	N/A	N/A	N/A	N/A	N/A	N/A	N/A	N/A	N/A	N/A
	N/A	N/A	N/A	N/A	N/A	N/A	N/A	N/A	N/A	N/A	N/A	N/A	N/A	N/A	N/A	N/A	N/A	N/A	N/A	N/A

\*Refer to Document MAN-018 or MAN-019 for measuring sliders